

# 11.09.2010\_Arena\_Winter



Oil Per Board: **40 uL**      Oil Pattern Distance: **40 Feet**      Volume Oil Total: **24.64 mL**      Total Boards Crossed: **616 Boards**

Forward Oil Total: **15.56 mL**      Reverse Oil Total: **9.08 mL**  
 Forward Boards Crossed: **389 Boards**      Reverse Boards Crossed: **227 Boards**

Notes: Dieses Ölmuster wurde von Speicherplatz # heruntergeladen in die Bahnpflegemaschine an 11.09.2010 12:59

Report Date  
**10/19/2010**

Conditioner:  
Type In or Select One

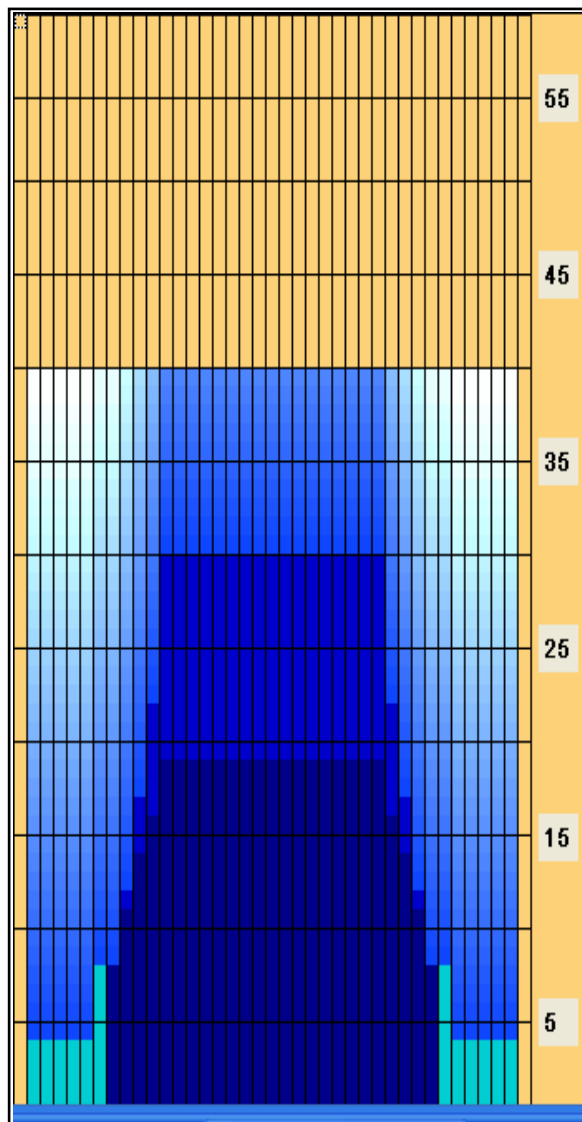
TransferType:  
Type In or Select One

Forward Oil

Reverse Oil

Combined Oil

Buff Area



	Start	Stop	Loads	Speed	Crossed	Start	End	Feet	T.Oil
1	2L	2R	4	10	148	0.0	4.2	4.2	5920
2	7L	7R	3	10	81	4.2	8.4	4.2	3240
3	9L	9R	2	10	46	8.4	11.2	2.8	1840
4	10L	10R	2	10	42	11.2	14.0	2.8	1680
5	11L	11R	2	10	38	14.0	16.8	2.8	1520
6	12L	12R	2	10	34	16.8	19.6	2.8	1360
7	2L	2R	0	18	0	19.6	30.0	10.4	0
8	2L	2R	0	30	0	30.0	40.0	10.0	0

	Start	Stop	Loads	Speed	Crossed	Start	End	Feet	T.Oil
1	2L	2R	0	26	0	40.0	30.0	-10.0	0
2	12L	12R	3	18	51	30.0	22.4	-7.6	2040
3	11L	11R	2	18	38	22.4	17.3	-5.1	1520
4	10L	10R	2	18	42	17.3	12.2	-5.1	1680
5	9L	9R	2	14	46	12.2	8.3	-3.9	1840
6	8L	8R	2	10	50	8.3	5.5	-2.8	2000
7	2L	2R	0	10	0	5.5	0.0	-5.5	0

Arrow Zone Ratios

Item	2-6L:16L-20	6-10L:16-20	11-16L:16L-20	16L-20:20-16R	16L-20:20-16R	20-16R:15-11R	20-16R:10-6R	20-16R:5-2R
Oil Arrow	160	400	1000	1040	1040	1000	400	160
Zone Ratio	6.5	2.6	1.04	1	1	1.04	2.6	6.5

Track Zone Ratios

Item	3L-7L:18L-18R	8L-12L:18L-18R	13L-17L:18L-18R	18L-18R:17R-13R	18L-18R:12R-8R	18L-18R:7R-3R
Description	Outside Track:Middle	Middle Track:Middle	Inside Track:Middle	Middle: Inside Track	Middle:Middle Track	Middle:Outside Track
Track Zone Ratio	5.65	1.51	1	1	1.51	5.65

