



# 2.BL Nord Da Schöneiche

Oil Per Board: 40 uL      Oil Pattern Distance: 39 Feet      Volume Oil Total: 21.16 mL      Total Boards Crossed: 529 Boards

Forward Oil Total: 13.08 mL  
Forward Boards Crossed: 327 Boards

Reverse Oil Total: 8.08 mL  
Reverse Boards Crossed: 202 Boards

This Pattern Up Loaded From Slot # 2 In Lane Machine On 26.07.2005 19:35 default value of 40 is put into Oil Per Board!!!

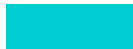
	Start	Stop	Loads	Speed	Crossed	Start	End	Feet	T.Oil
1	2L	2R	3	10	111	0.0	2.8	2.8	4440
2	6L	6R	3	10	87	2.8	7.0	4.2	3480
3	10L	10R	2	14	42	7.0	10.9	3.9	1680
4	11L	11R	2	14	38	10.9	14.8	3.9	1520
5	12L	12R	2	14	34	14.8	18.7	3.9	1360
6	13L	13R	1	14	15	18.7	20.6	1.9	600
7	2L	2R	0	22	0	20.6	29.0	8.4	0
8	2L	2R	0	10	0	29.0	39.0	10.0	0

	Start	Stop	Loads	Speed	Crossed	Start	End	Feet	T.Oil
1	2L	2R	0	30	0	39.0	34.0	-5.0	0
2	13L	13R	2	22	30	34.0	27.8	-6.2	1200
3	12L	12R	2	22	34	27.8	21.6	-6.2	1360
4	11L	11R	2	22	38	21.6	15.4	-6.2	1520
5	10L	10R	2	18	42	15.4	10.3	-5.1	1680
6	6L	6R	2	14	58	10.3	6.4	-3.9	2320
7	2L	2R	0	10	0	6.4	0.0	-6.4	0

Conditioner:  
Type In or Select One

TransferType:  
Type In or Select One

Forward



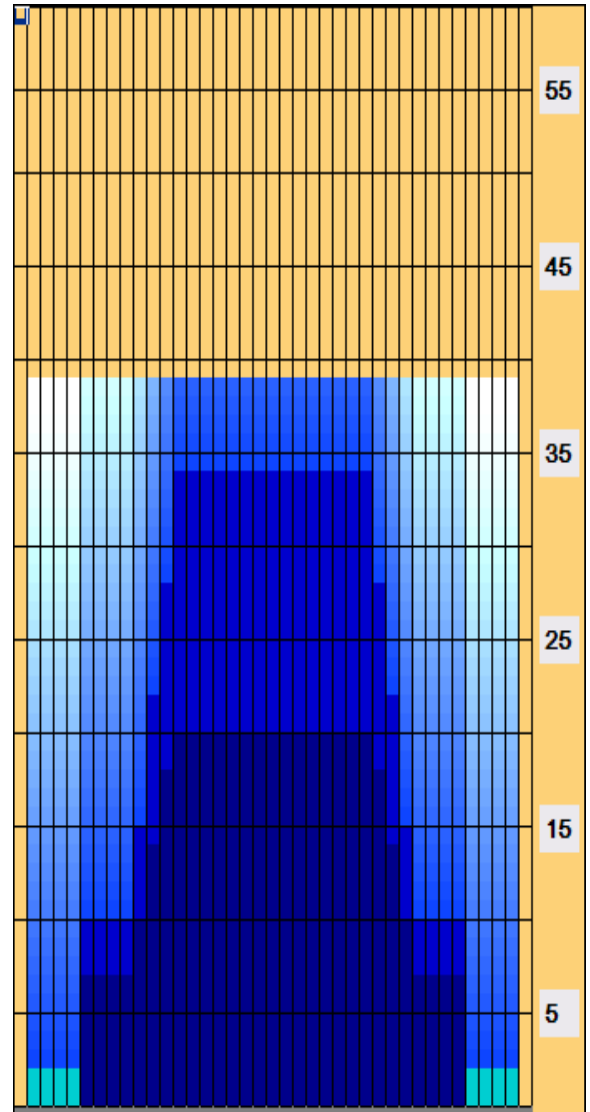
Reverse



Combined



Buff



Arrow Zone Ratios

Item	2-5L:16L-20	6-10L:16-20	11-15L:16L-20	16L-20:20-16R	16L-20:20-16R	20-16R:15-11R	20-16R:10-6R	20-16R:5-2R
ul Arrow	120	352	840	920	920	840	352	120
Zone Ratio	7.67	2.61	1.1	1	1	1.1	2.61	7.67

Track Zone Ratios

Item	3L-7L:18L-18R	8L-12L:18L-18R	13L-17L:18L-18R	18L-18R:17R-13R	18L-18R:12R-8R	18L-18R:7R-3R
Description	Outside Track:Middle	Middle Track:Middle	Inside Track:Middle	Middle: Inside Track	Middle:Middle Track	Middle:Outside Track
Track Zone Ratio	4.6	1.8	1	1	1.8	4.6

