

DM Aktive 2019 - Mixed 40' Hasenheide Berlin



Oil Pattern Distance: 40 Feet **Reverse Brush Drop:** 40 Feet **Oil Per Board:** 40 uL
Forward Oil Total: 11.68 mL **Reverse Oil Total:** 9.48 mL **Volume Oil Total:** 21.16 mL
Forward Boards Crossed: 292 Boards **Reverse Boards Crossed:** 237 Boards **Total Boards Crossed:** 529 Boards

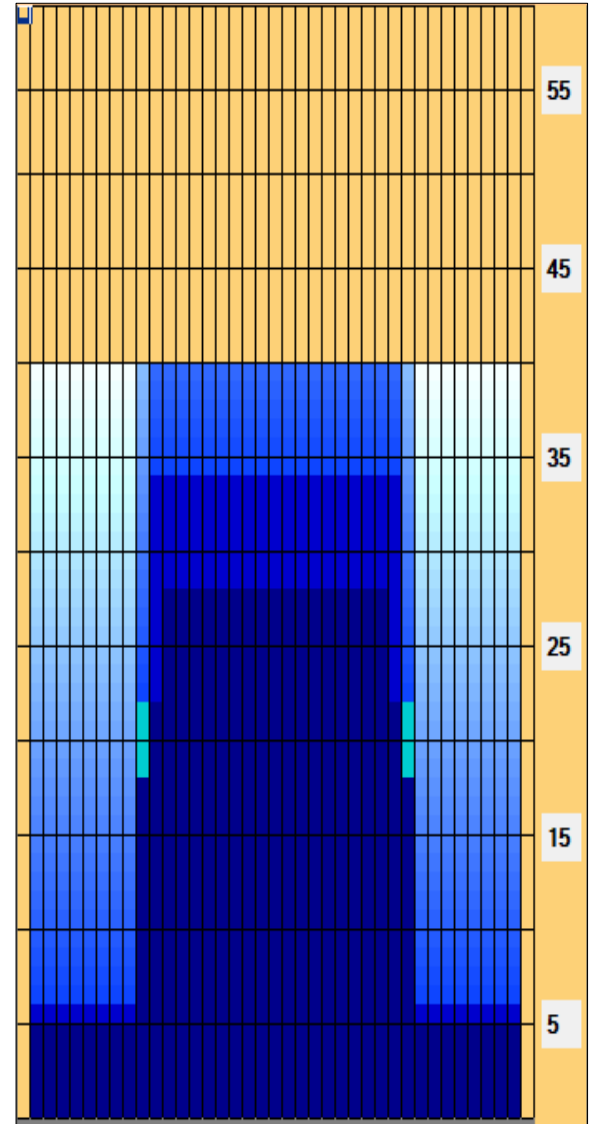
	Start	Stop	Loads	Speed	Crossed	Start	End	Feet	T.Oil
1	2L	2R	3	18	111	0.0	5.1	5.1	4440
2	10L	10R	4	18	84	5.1	15.3	10.2	3360
3	10L	10R	3	18	63	15.3	22.9	7.6	2520
4	12L	12R	2	18	34	22.9	28.0	5.1	1360
5	2L	2R	0	22	0	28.0	32.0	4.0	0
6	2L	2R	0	30	0	32.0	40.0	8.0	0

	Start	Stop	Loads	Speed	Crossed	Start	End	Feet	T.Oil
1	2L	2R	0	30	0	40.0	34.0	-6.0	0
2	11L	11R	5	22	95	34.0	18.5	-15.5	3800
3	10L	10R	5	18	105	18.5	5.8	-12.7	4200
4	2L	2R	1	14	37	5.8	3.9	-1.9	1480
5	2L	2R	0	14	0	3.9	0.0	-3.9	0

Conditioner:
Type In or Select One

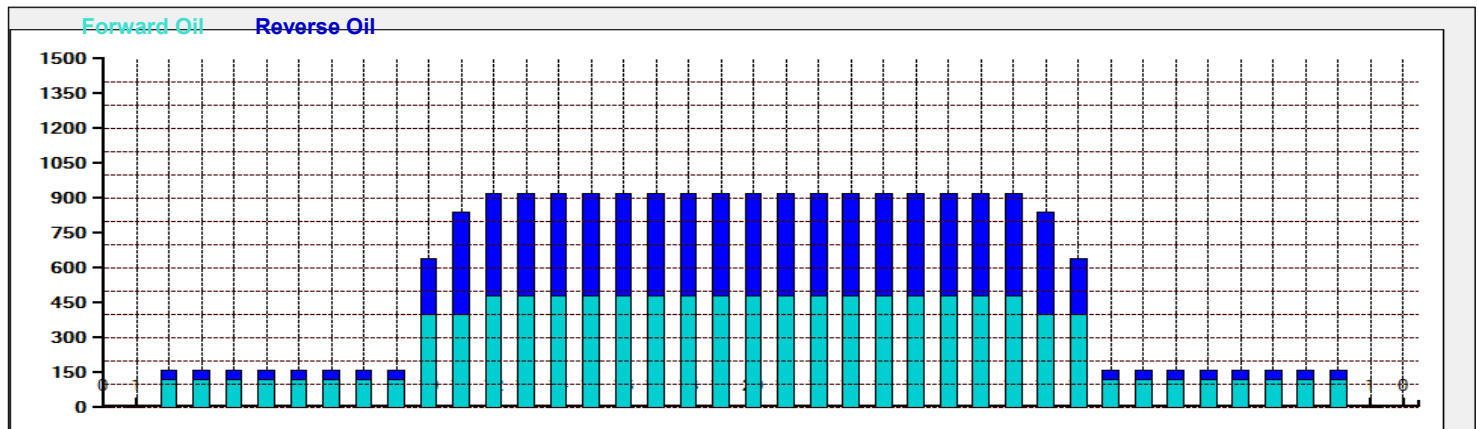
TransferType:
Type In or Select One

- Forward
- Reverse
- Combined
- Buff



Dieses Oelmuster wurde uploaded von Schlitz #1 In Lane Machine On 16.05.2019 19:27

Item Description	3L-7L:18L-18R Outside Track:Middle	8L-12L:18L-18R Middle Track:Middle	13L-17L:18L-18R Inside Track:Middle	18L-18R:17R-13R Middle: Inside Track	18L-18R:12R-8R Middle:Middle Track	18L-18R:7R-3R Middle:Outside Track
Track Zone Ratio	5.75	1.69	1	1	1.69	5.75



Neue Upload#2019136192714489



Oil Pattern Distance:	40 Feet	Reverse Brush Drop:	40 Feet	Oil Per Board:	40 uL
Forward Oil Total:	11.68 mL	Reverse Oil Total:	9.48 mL	Volume Oil Total:	21.16 mL
Forward Boards Crossed:	292 Boards	Reverse Boards Crossed:	237 Boards	Total Boards Crossed:	529 Boards
