

Deutsche Meisterschaften Junioren 2017



Oil Pattern Distance: 40 Feet **Reverse Brush Drop:** 40 Feet **Oil Per Board:** 40 uL
Forward Oil Total: 10.92 mL **Reverse Oil Total:** 12.08 mL **Volume Oil Total:** 23 mL
Forward Boards Crossed: 273 Boards **Reverse Boards Crossed:** 302 Boards **Total Boards Crossed:** 575 Boards

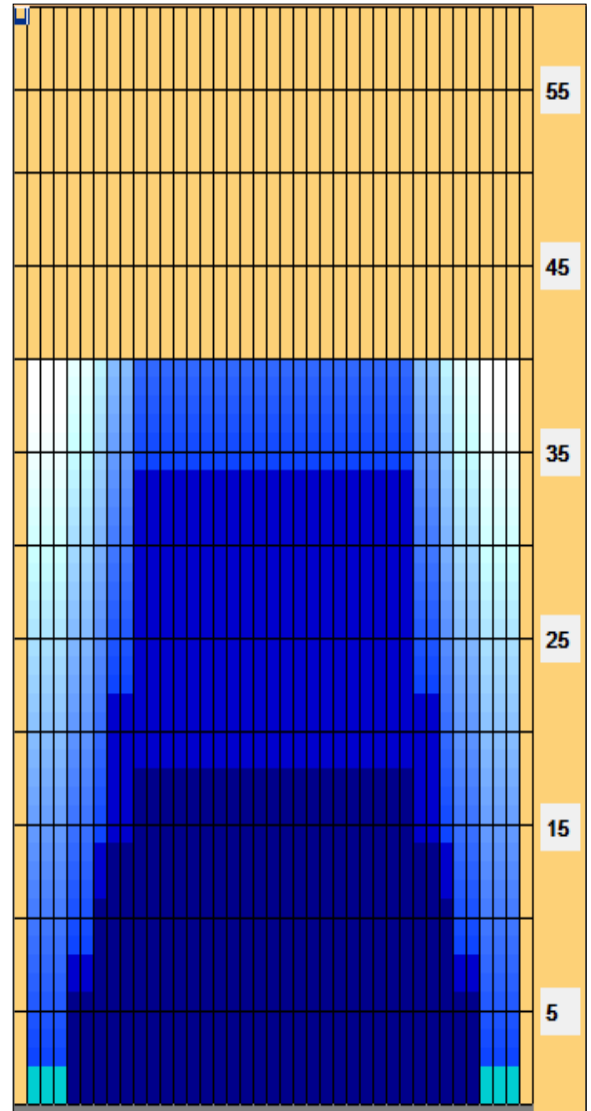
	Start	Stop	Loads	Speed	Crossed	Start	End	Feet	T.Oil
1	2L	2R	3	10	111	0.0	2.8	2.8	4440
2	5L	5R	2	14	62	2.8	6.7	3.9	2480
3	7L	7R	2	18	54	6.7	11.8	5.1	2160
4	8L	8R	1	22	25	11.8	14.9	3.1	1000
5	10L	10R	1	22	21	14.9	18.0	3.1	840
6	2L	2R	0	26	0	18.0	40.0	22.0	0

	Start	Stop	Loads	Speed	Crossed	Start	End	Feet	T.Oil
1	2L	2R	0	26	0	40.0	34.0	-6.0	0
2	10L	10R	4	22	84	34.0	21.6	-12.4	3360
3	8L	8R	3	18	75	21.6	14.0	-7.6	3000
4	7L	7R	3	14	81	14.0	8.1	-5.9	3240
5	5L	5R	2	14	62	8.1	4.2	-3.9	2480
6	2L	2R	0	10	0	4.2	0.0	-4.2	0

Conditioner:
 Type In or Select
 One

 TransferType:
 Type In or Select
 One

- Forward
- Reverse
- Combined
- Buff



Item	3L-7L:18L-18R	8L-12L:18L-18R	13L-17L:18L-18R	18L-18R:17R-13R	18L-18R:12R-8R	18L-18R:7R-3R
Description	Outside Track:Middle	Middle Track:Middle	Inside Track:Middle	Middle: Inside Track	Middle:Middle Track	Middle:Outside Track
Track Zone Ratio	3.28	1.11	1	1	1.11	3.28

