

DM Senioren 2012 Schillerpark



Oil Pattern Distance: 40 Feet **Reverse Brush Drop:** 40 Feet **Oil Per Board:** 40 uL
Forward Oil Total: 9.96 mL **Reverse Oil Total:** 12.48 mL **Volume Oil Total:** 22.44 mL
Forward Boards Crossed: 249 Boards **Reverse Boards Crossed:** 312 Boards **Total Boards Crossed:** 561 Boards

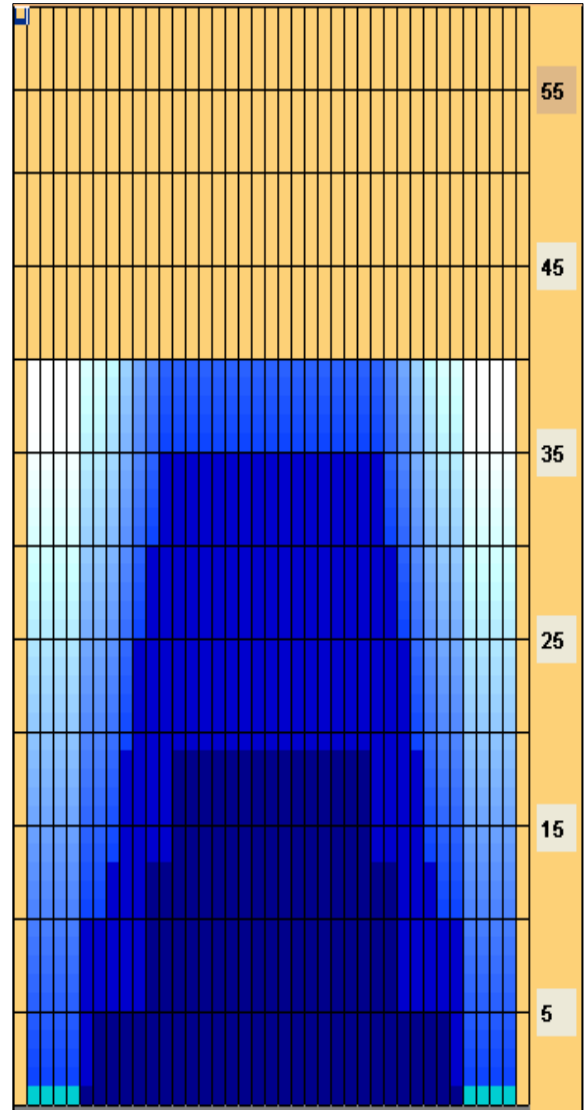
| | Start | Stop | Loads | Speed | Crossed | Start | End | Feet | T.Oil |
|---|-------|------|-------|-------|---------|-------|------|------|-------|
| 1 | 2L | 2R | 2 | 10 | 74 | 0.0 | 1.4 | 1.4 | 2960 |
| 2 | 7L | 7R | 2 | 14 | 54 | 1.4 | 5.3 | 3.9 | 2160 |
| 3 | 11L | 11R | 4 | 14 | 76 | 5.3 | 13.2 | 7.9 | 3040 |
| 4 | 13L | 13R | 3 | 14 | 45 | 13.2 | 19.1 | 5.9 | 1800 |
| 5 | 2L | 2R | 0 | 18 | 0 | 19.1 | 26.0 | 6.9 | 0 |
| 6 | 2L | 2R | 0 | 26 | 0 | 26.0 | 34.0 | 8.0 | 0 |
| 7 | 2L | 2R | 0 | 26 | 0 | 34.0 | 36.0 | 2.0 | 0 |
| 8 | 2L | 2R | 0 | 26 | 0 | 36.0 | 40.0 | 4.0 | 0 |

| | Start | Stop | Loads | Speed | Crossed | Start | End | Feet | T.Oil |
|---|-------|------|-------|-------|---------|-------|------|------|-------|
| 1 | 2L | 2R | 0 | 30 | 0 | 40.0 | 35.0 | -5.0 | 0 |
| 2 | 12L | 12R | 2 | 18 | 34 | 35.0 | 29.9 | -5.1 | 1360 |
| 3 | 11L | 11R | 2 | 18 | 38 | 29.9 | 24.8 | -5.1 | 1520 |
| 4 | 10L | 10R | 3 | 14 | 63 | 24.8 | 18.9 | -5.9 | 2520 |
| 5 | 9L | 9R | 3 | 14 | 69 | 18.9 | 13.0 | -5.9 | 2760 |
| 6 | 8L | 8R | 2 | 10 | 50 | 13.0 | 10.2 | -2.8 | 2000 |
| 7 | 6L | 6R | 2 | 10 | 58 | 10.2 | 7.4 | -2.8 | 2320 |
| 8 | 2L | 2R | 0 | 10 | 0 | 7.4 | 0.0 | -7.4 | 0 |

Conditioner:
 Type In or Select
 One

 TransferType:
 Type In or Select
 One

- Forward
- Reverse
- Combined
- Buff



| Item | 3L-7L:18L-18R | 8L-12L:18L-18R | 13L-17L:18L-18R | 18L-18R:17R-13R | 18L-18R:12R-8R | 18L-18R:7R-3R |
|------------------|----------------------|---------------------|---------------------|----------------------|---------------------|----------------------|
| Description | Outside Track:Middle | Middle Track:Middle | Inside Track:Middle | Middle: Inside Track | Middle:Middle Track | Middle:Outside Track |
| Track Zone Ratio | 7.81 | 1.67 | 1 | 1 | 1.67 | 7.81 |

